



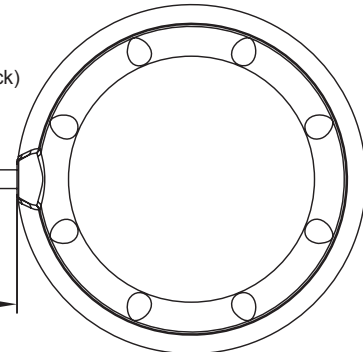
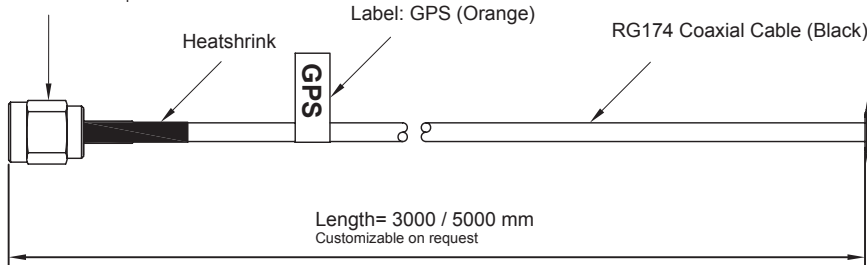
AP003 GPS Antenna

Glass Mount type Car Antenna

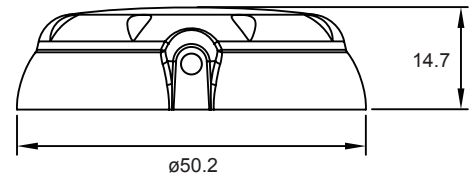
Product No. AP003WSGPSXXX

Dimension

SMA Plug Connector
Customizable on request



AP003 Active GPS Antenna



Unit: mm



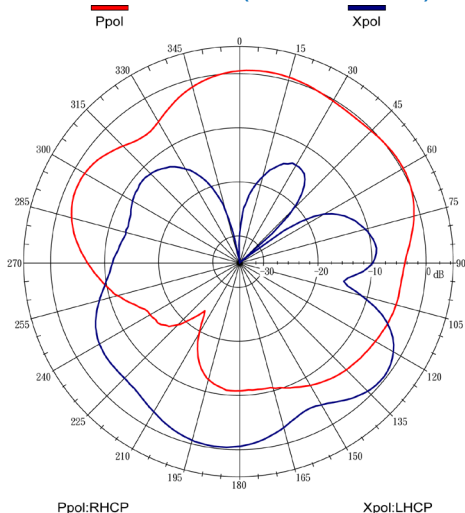
Mechanical Specification

Description	Specification
Antenna Type	Inside On Glass Adhesive mount
Antenna Material	ABS
Antenna Color	Black
Operating Temperature	-20°C ~ +80°C
Cable Type	RG174U
Cable Length	3M / 5M Customizable on request
Connector Type	SMA / FME / MMCX / MCX Customizable on request
Connector Plating	Gold / Nickel

Electrical Specification

Patch	
Center Frequency	1575.42 ± 1.023 MHz
Bandwidth (10dB return loss)	10 MHz
Gain at Zenith	1 dBic typ.
Gain at 10° elevation	-5.0 dBic min.
Polarization	R.H.C.P
Impedance	50 ohm
Axial Ratio	1.0 dB typ.

GPS Radiation Pattern (without LNA)



LNA Performance	
Center Frequency	1575.42 ± 1.023 MHz
Gain	26~35 dB typ. (3V / 28 dB)
Noise Figure	1.5 dB typ. at 3V
Filter Out Band Attenuation	Saw filter 40 dB typ. fo±50 MHz 45 dB Min. fo±100 MHz (fo=1575.42 MHz)
Output VSWR	2.0 max
Voltage	DC=2.5 ~ 5.5V
Current	DC=8~23mA (3V / 10mA)