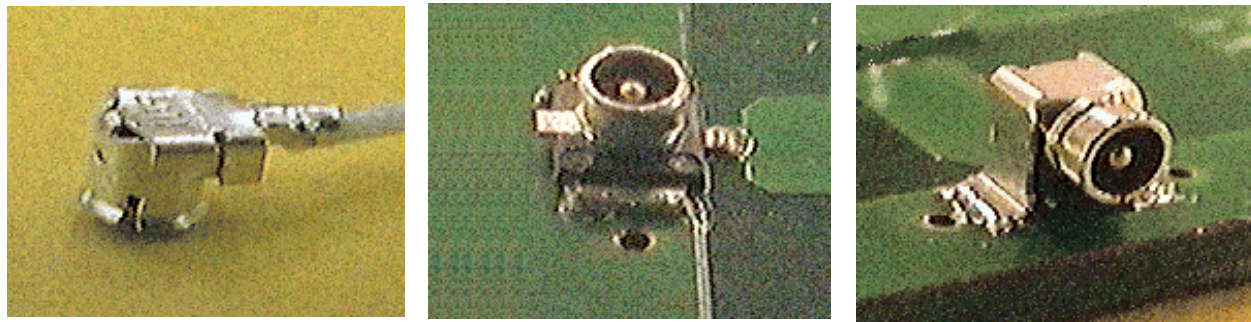


Space saving coaxial connectors

E.FL Series



Wellshow



Wellshow Technology is the top manufacturer of mini coaxial cable assembly and RF connectors in Asia.



Wellshow's strength

- Quick Lead Time
- Competitive price
- Complete quality management
- Full series of RF connectors
- Prompt technique support
- Systemized manufacturing procedure



Product Range

Mini connector and Mini cable

Hirose U.FL/ W.FL/ H.FL/ N.FL/ E.FL/ W.FL2
IPEX MHF/ MHF 2 / MHF 3/ MHF 4
Murata GSC/ HSC

RF connector and RF cable

SMA / SMB / SSMB / SMC / MMCX /
MCX / FME / BNC / TNC / N ...etc.



Contact us

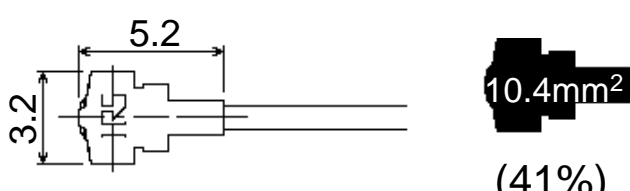
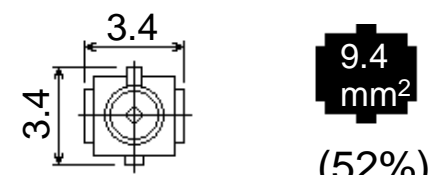
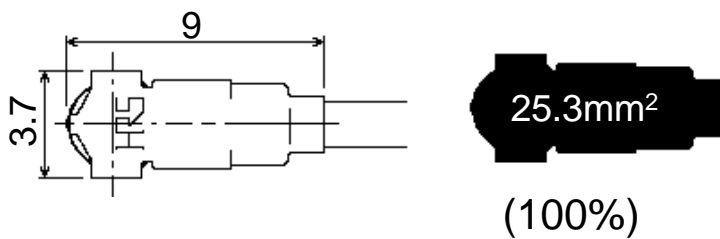
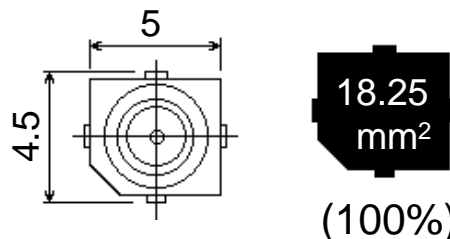
Tel: +886-2-24270488
Fax: +886-2-24260387

9F., No.181, Nanrong Rd., Ren-ai Dist.
Keelung City 200, Taiwan

Features

- 1 **Extremely small: 9.4mm² board space**
- 2 **High density internal wiring:**
FEP cables with 0.8mm external dia.
- 3 **Recognition of engagement: Tactile lock sensation**
- 4 **Automatic mounting: Embossed carrier taping**

Downsizing

	Plug	Receptacle
E.FL		
H.FL (Conventional Type)		

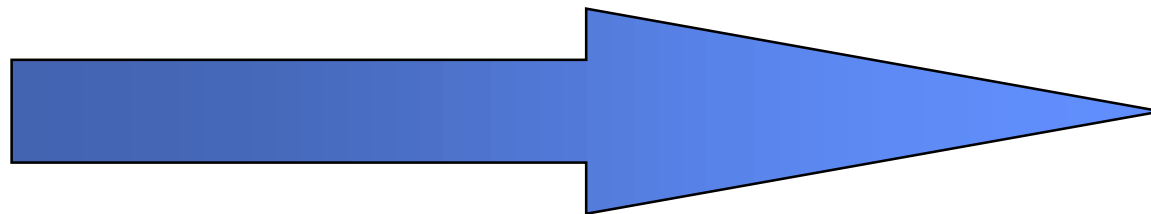
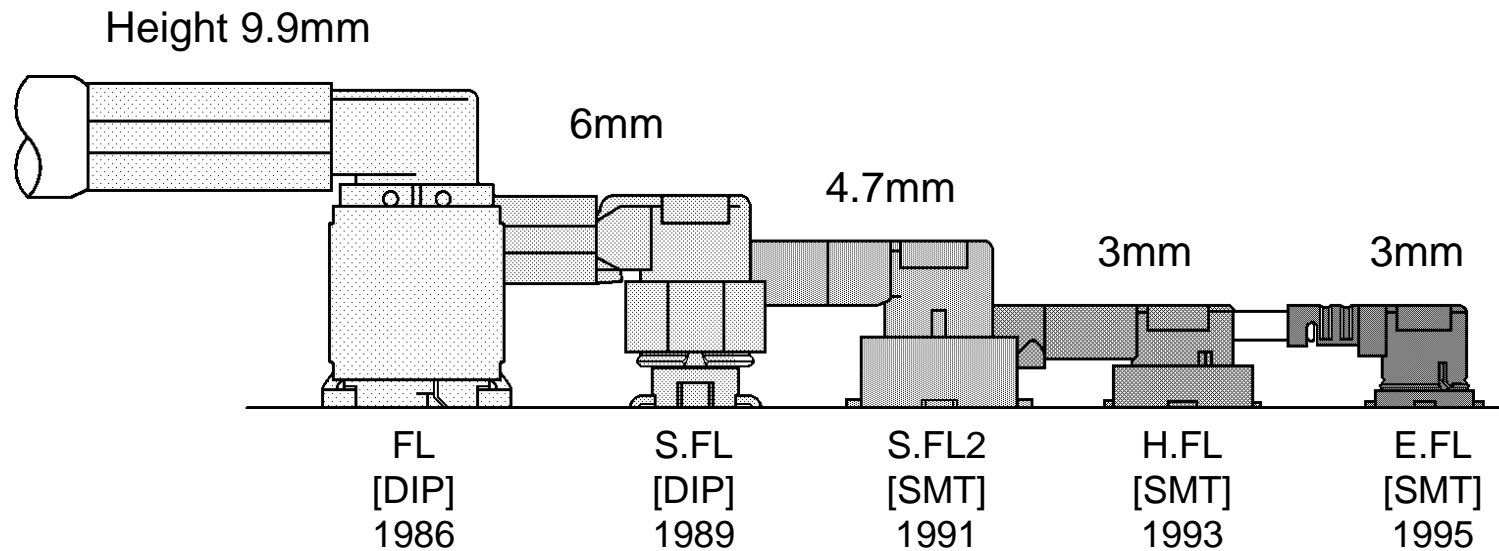
Note: All dimensions in millimeters unless otherwise specified.

Specifications herein are subject to change without notice.
Contact Hirose for latest specifications, drawings, or availabilities.

Issued: Apr. 26, 2001

HRS HIROSE
ELECTRIC
CO.,LTD.

FL Series History



The heights are approximate.

Specifications herein are subject to change without notice.
Contact Hirose for latest specifications, drawings, or availabilities.

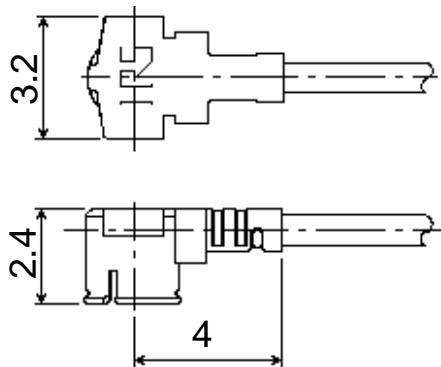
Issued: Apr. 26, 2001

HRS HIROSE
ELECTRIC
CO.,LTD.

E.FL Dimensions

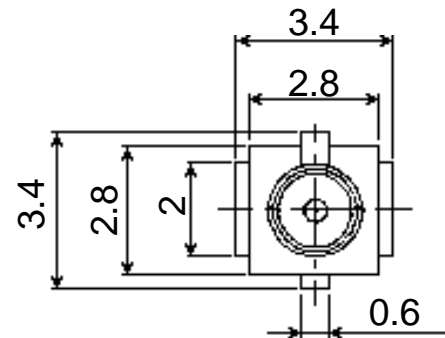
Plug

Cable Assembled
E.FL-LP-040

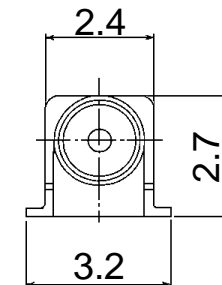
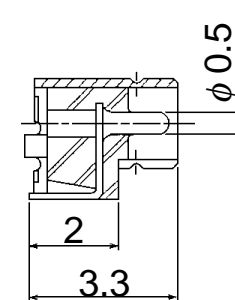
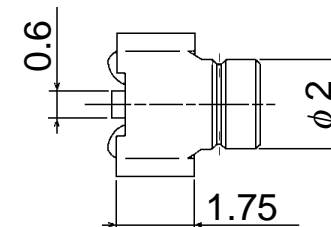
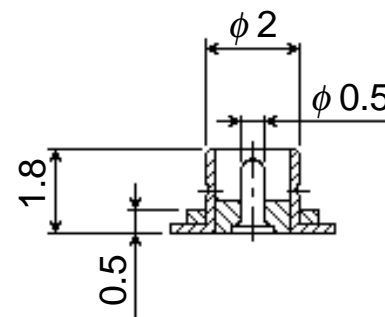


Receptacle

Straight Type
E.FL-R-SMT

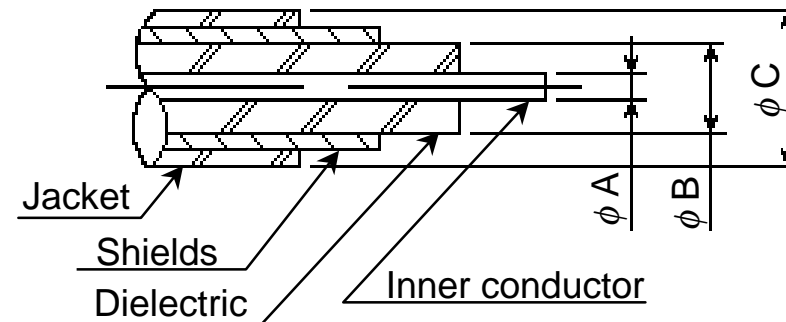


Right Angle Type
E.FL-LR-SMT



Note: All dimensions in millimeters unless otherwise specified.

Specified Cable

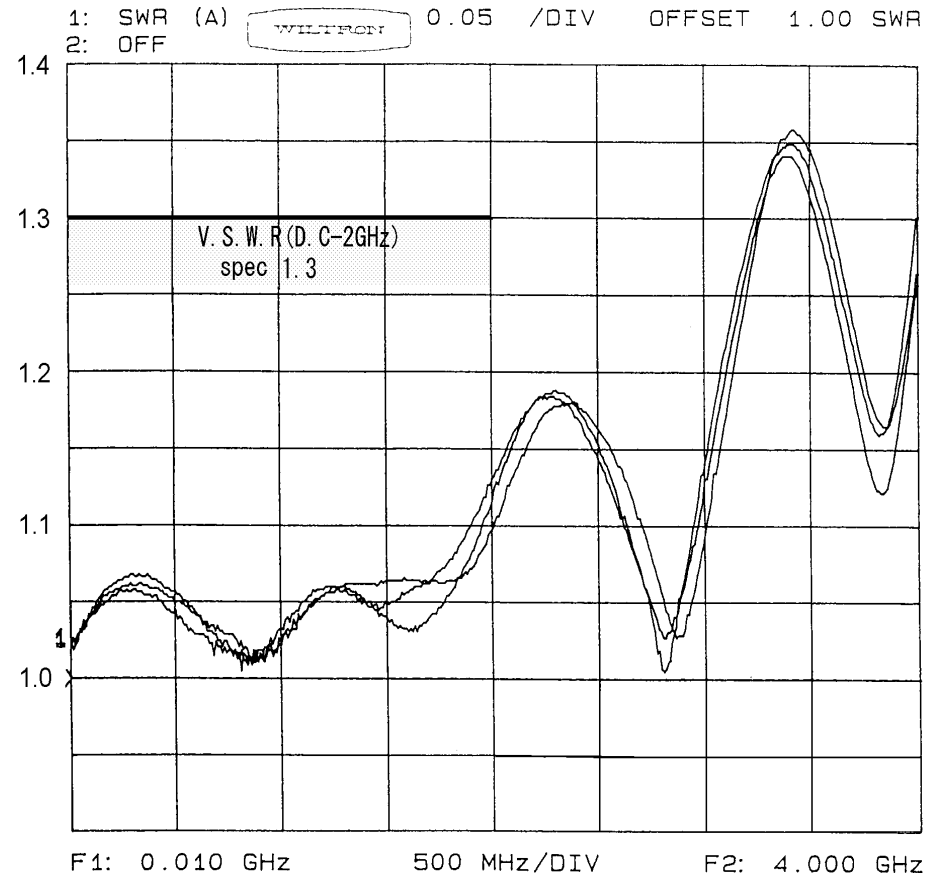
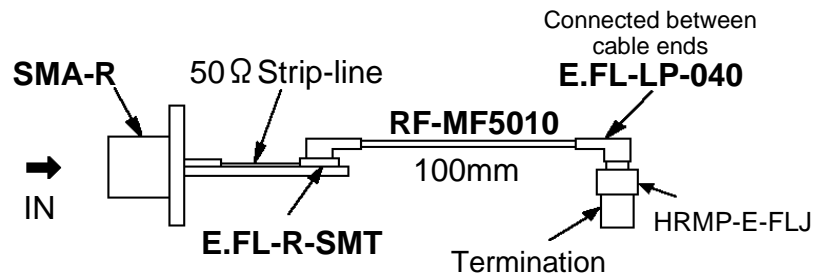


Connector Name	Cable Dimensions [mm]			Cable Supplier and Part No.
	ϕA	ϕB	ϕC	
E.FL-LP-040	AWG 36 (7/44)	0.4	0.8	CO-6F-SB-CX50: Hitachi Cable, Ltd. F12B0074-B: JUNKOSHA CO., LTD. 0.4DS-PBA: Sumitomo Electric Industries Ltd. RF-MF5010: NISSEI ELECTRIC CO., LTD.
E-FL-LP-066	AWG 32 (7/40)	0.66	1.32	CO-6F-DSB-CX-50: Hitachi Cable, Ltd. A12B0733: JUNKOSHA CO., LTD.

Note: Use specified cables. Similar cables produced by other manufacturers often differ in dimensional tolerance, material, etc.

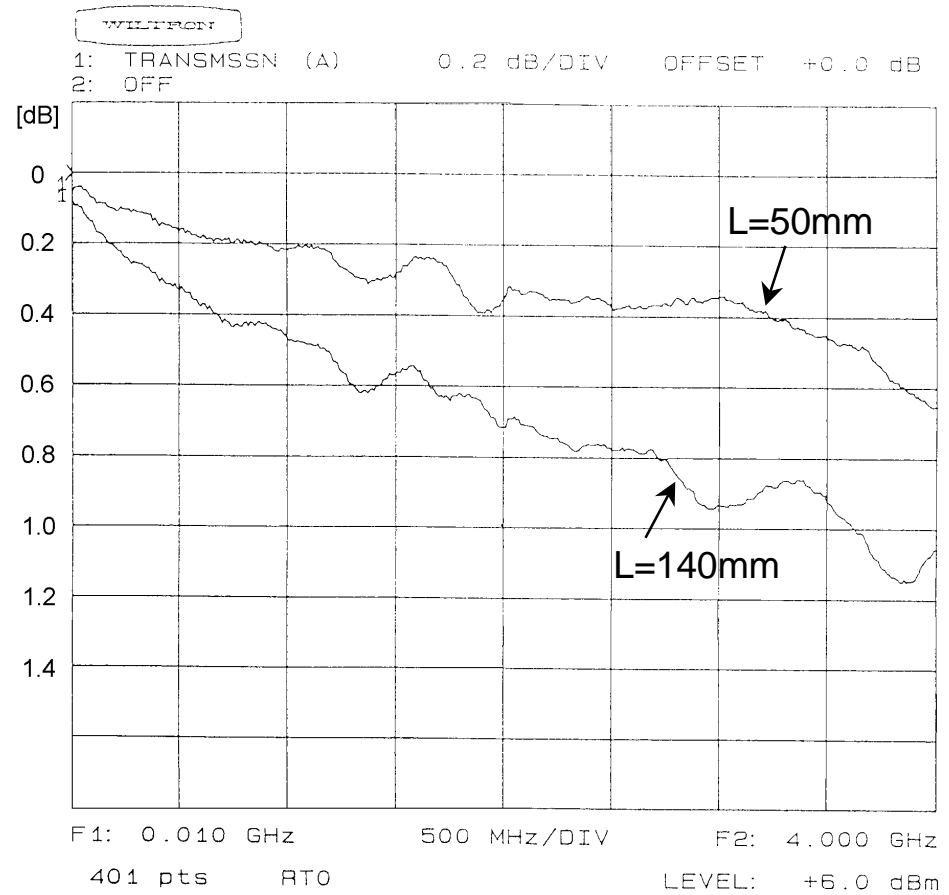
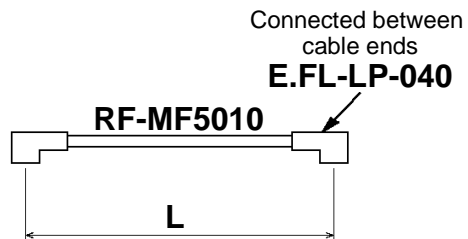
V.S.W.R

◆ Test Set



Insertion Loss

◆ Test Set



Specifications

Material and Finish

ITEM	MATERIAL	FINISH
Shell	Phosphor bronze	Silver plating
Insulator	PBT polymer (Plug side) LCP (Receptacle side)	94V-0 94V-0
Male Contact	Brass	Gold plating
Female Contact	Phosphor bronze	Gold plating

Performance Characteristics

Contact Resistance	20m Ω (Inner), 10m Ω (Outer) at 10mA DC
Withstanding Voltage	200V AC r.m.s for 1 minute
Insulation Resistance	500M Ω min. at 100V DC
Durability	50 cycles
Characteristic Impedance	50 Ω
V.S.W.R	1.3 max. at DC - 2GHz